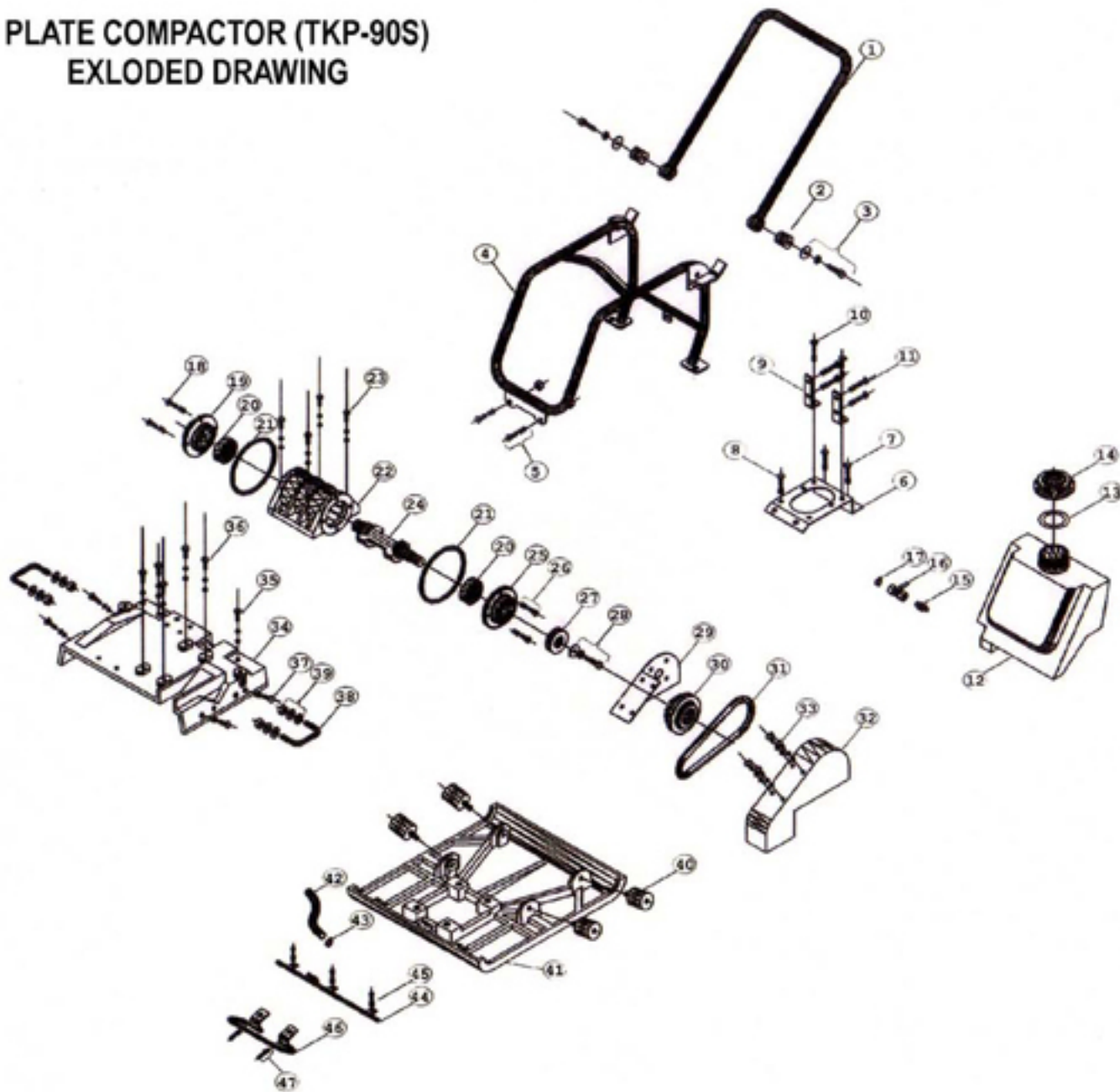


PLATE COMPACTOR (TKP-90S) EXPLODED DRAWING



REF NO	DESCRIPTION
1	FOLDING HANDLE
2	HANDLE RUBBER BUSH
3	CAP SCREW M12 X 55
4	PLAIN WASHER M12
5	SPRING WASHER M12
6	LOCK NUT M12
7	LIFTING HOOK
8	HEX. BOLT M10 X 30
9	PLAIN WASHER M10
10	SPRING WASHER M10
11	HEX. NUT M10
12	TANK BRACKET A
13	HEX. BOLT M10 X 35
14	PLAIN WASHER M10
15	SPRING WASHER M10
16	HEX. NUT M10
17	HEX. BOLT M10 X 45
18	PLAIN WASHER M8
19	SPRING WASHER M8
20	TANK BRACKET B
21	HEX. BOLT M10 X 35
22	PLAIN WASHER M10
23	SPRING WASHER M10
24	HEX. NUT M10
25	HEX. BOLT M8 X 45
26	PLAIN WASHER M8
27	SPRING WASHER M8
28	TANK BRACKET C
29	HEX. BOLT M10 X 35
30	PLAIN WASHER M10
31	SPRING WASHER M10
32	HEX. NUT M10
33	HEX. BOLT M8 X 45
34	PLAIN WASHER M8
35	SPRING WASHER M8
36	TANK BRACKET D
37	HEX. BOLT M10 X 35
38	PLAIN WASHER M10
39	SPRING WASHER M10
40	HEX. NUT M10
41	HEX. BOLT M8 X 45
42	PLAIN WASHER M8
43	SPRING WASHER M8
44	TANK BRACKET E
45	HEX. BOLT M10 X 35
46	PLAIN WASHER M10
47	SPRING WASHER M10

REF NO	DESCRIPTION
24	ROTOR SHAFT
25	ROTOR COVER (B)
26	HEX. BOLT M8 X 25
27	SPRING WASHER M8
28	ROTOR PULLEY
29	HEX. BOLT M10 X 30
30	SPECIAL WASHER
31	SPRING WASHER M10
32	BELT COVER BRACKET
33	CLUTCH
34	V-BELT
35	BELT COVER
36	HEX. BOLT M8 X 30
37	PLAIN WASHER M8
38	SPRING WASHER M8
39	ENGINE MOUNTING PLATE
40	HEX. BOLT M10 X 35
41	PLAIN WASHER M10
42	SPRING WASHER M10
43	HEX. BOLT M8 X 35
44	PLAIN WASHER M8
45	SPRING WASHER M8
46	HEX. BOLT M12 X 40
47	PLAIN WASHER M12
48	SPRING WASHER M12
49	HANDLE LIFT (B)
50	PLAIN WASHER M12
51	SPRING WASHER M12
52	GASKET
53	WATER TANK CAP
54	NIPPLE 3/8"
55	BALL VALVE 3/8"
56	CLIP 3/8"
57	HEX. BOLT M8 X 25
58	SPRING WASHER M8
59	ROTOR COVER (A)
60	BEARINGS
61	O-RING
62	ROTOR HOUSING
63	HEX. BOLT M14 X 40
64	PLAIN WASHER M14
65	PLAIN WASHER M8
66	SPRING WASHER M8
67	HANDLE LIFT (A)
68	HEX. BOLT M8 X 30
69	PLAIN WASHER M8
70	SPRING WASHER M8